



**RIGHT  
HERE  
RIGHT  
NOW...**



...crystal is causing personal,  
financial and health problems for  
some people in our community.



**Find out from our website  
what help is available.**

**[www.rightnow.acon.org.au](http://www.rightnow.acon.org.au)**

Call 9206 2000 / 1800 063 060



**RIGHT  
HERE  
RIGHT  
NOW...**



**... there is treatment and support for people who are dependent on crystal.**



**Find out what's available.**

**[www.rightnow.acon.org.au](http://www.rightnow.acon.org.au)**

**Call 9206 2000 / 1800 063 060**



**RIGHT  
HERE  
RIGHT  
NOW...**

**... many people in our  
community are affected by  
anxiety and depression.**

**Call ACON to find out about  
counselling and other support services.**

**[www.rightnow.acon.org.au](http://www.rightnow.acon.org.au)**

**Call 9206 000 / 1800 063 060**



**acon**

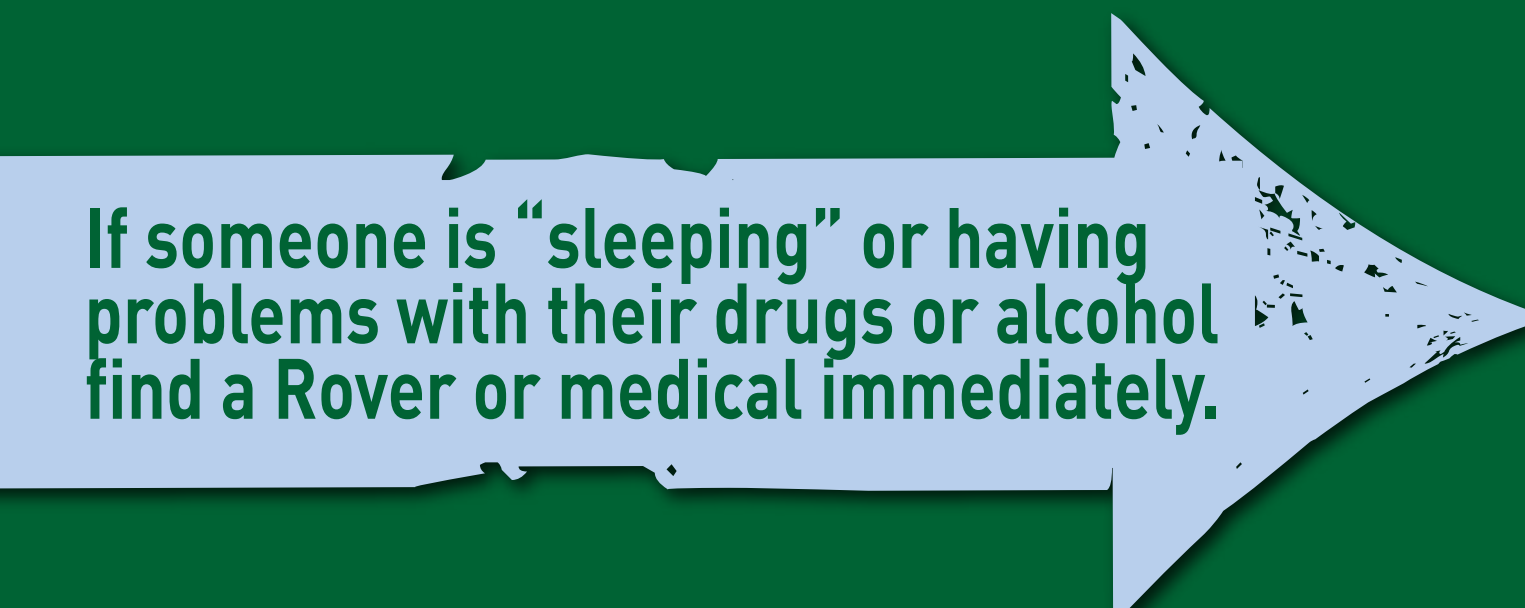
community, health and action



**RIGHT  
HERE  
RIGHT  
NOW...**



**... ACON's Drug Rovers  
are here to help keep you  
and your mates safe.**



**If someone is "sleeping" or having  
problems with their drugs or alcohol  
find a Rover or medical immediately.**

**[www.rightnow.acon.org.au](http://www.rightnow.acon.org.au)**

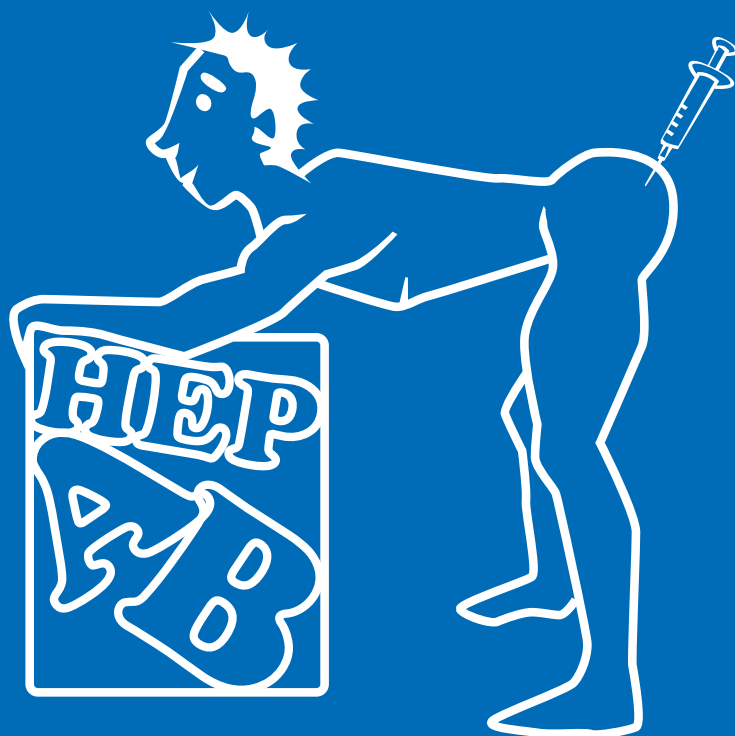
**Call 9206 2000 / 1800 063 060**

**RIGHT**

**HERE**

**RIGHT**

**NOW...**



**... most young gay men  
are not getting the  
vaccinations they need.**

**Get your Hepatitis  
A & B shots now.**

**[www.rightnow.acon.org.au](http://www.rightnow.acon.org.au)**

**Call 9206 2000 / 1800 063 060**



**acon**

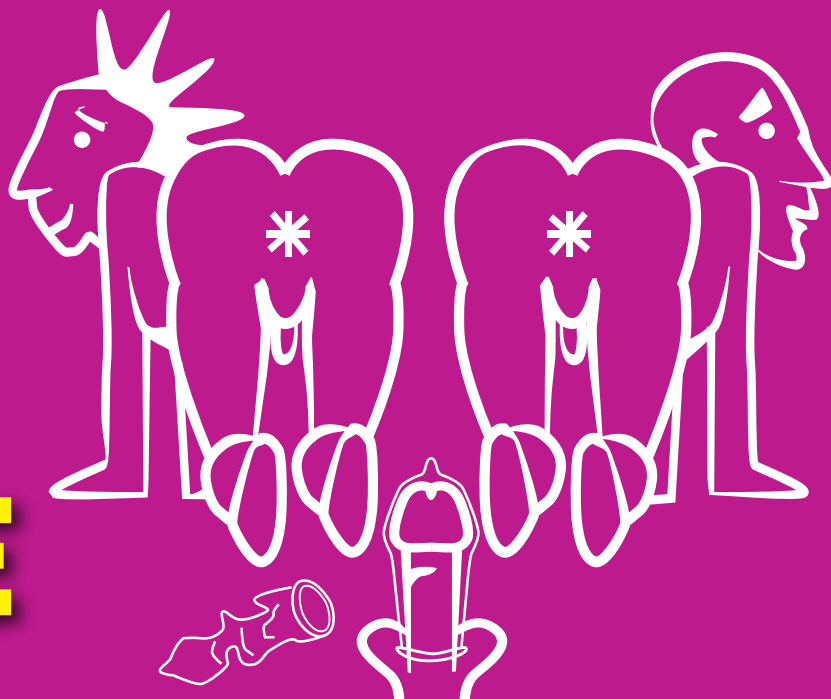
community, health and action

**RIGHT**

**HERE**

**RIGHT**

**NOW...**



... Hep C is being passed from  
arse to arse in group sex by  
sharing toys, fists or cocks.

When moving from arse to arse,  
wash your hands and toys and  
change gloves and condoms.

**[www.rightnow.acon.org.au](http://www.rightnow.acon.org.au)**

Call 9206 2000 / 1800 063 060



**acon**

community, health and action

**RIGHT  
HERE  
RIGHT  
NOW...**



**... unless he says he's  
positive you can't be  
certain of his HIV status.**

**If you're not 100%  
sure use condoms.**

**[www.rightnow.acon.org.au](http://www.rightnow.acon.org.au)**

**Call 9206 2000 / 1800 063 060**



**acon**

community, health and action

**RIGHT  
HERE  
RIGHT  
NOW...**



**... taking treatment breaks  
can increase your viral load.**

**Take enough meds with you  
whenever you travel or party.**

**[www.rightnow.acon.org.au](http://www.rightnow.acon.org.au)**

**Call 9206 2000 / 1800 063 060**





**RIGHT  
HERE  
RIGHT  
NOW...**



**... 25% of HIV infections  
are happening in  
relationships.**



**Know your HIV status and  
talk about all the sex you have.**

**[www.rightnow.acon.org.au](http://www.rightnow.acon.org.au)**

**Call 9206 2000 / 1800 063 060**



**acon**

community, health and action

**RIGHT  
HERE  
RIGHT  
NOW...**



**... HIV infection rates are falling  
in NSW because gay men use  
condoms with casual partners.**

**Keep it up.**

**[www.rightnow.acon.org.au](http://www.rightnow.acon.org.au)**

**Call 9206 2000 / 1800 063 060**

**RIGHT  
HERE  
RIGHT  
NOW...**



... a full sexual health check  
up involves getting a throat,  
arse, urine and blood test.

**Get an STI check up regularly**

**[www.rightnow.acon.org.au](http://www.rightnow.acon.org.au)**

Call 9206 2000 / 1800 063 060



**acon**

community, health and action

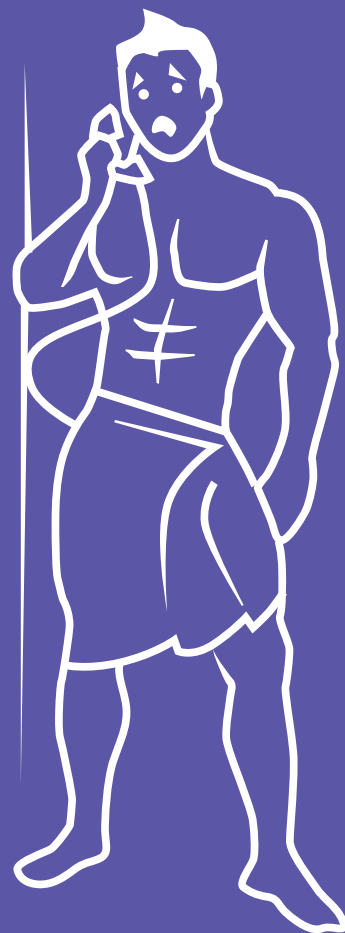
## Reduce the range of drugs you take and avoid mixing them with alcohol.

**Call 9206 2000 / 1800 063 060**



community, health and action

**RIGHT  
HERE  
RIGHT  
NOW...**



**... taking PEP may prevent you  
from becoming infected if you  
have just been exposed to HIV.**

**Call 1800 737 669 (1800 PEP NOW)**

**[www.rightnow.acon.org.au](http://www.rightnow.acon.org.au)**

**Call 9206 2000 / 1800 063 060**



**acon**

community, health and action

OXFORD ST

**RIGHT  
HERE  
RIGHT  
NOW...**



**... more homophobic  
violence happens around  
Mardi Gras than any other time.**

**To stay safe travel with friends,  
get a taxi, cover up and stay alert.**

**[www.rightnow.acon.org.au](http://www.rightnow.acon.org.au)**

**Call 9206 2000 / 1800 063 060**



**acon**

community, health and action



**RIGHT  
HERE  
RIGHT  
NOW...**



**... most young lesbians and  
queer women aren't getting the  
sexual health tests they should.**



**Find out from our website  
what tests you need.**

**[www.rightnow.acon.org.au](http://www.rightnow.acon.org.au)**

**Call 9206 2000 / 1800 063 060**